

IRONWORKS

TOLL FREE: 1-800-669-5613

IRONWORKS RATES; Space available by column inch only, one inch minimum. Rate is \$50 per inch, special typesetting, borders, photo inclusion, blind ads, \$10 extra each. Deadlines: By mail, 15th of month prior to publication. Place your ad toll-free 24 hours a day from anywhere in the USA (except Alaska and Hawaii) 1-800-669-5613 ask for Classifieds 8:30-5 pm CST. After business hours our automatic ad taker will take your ads.

I BUY 548 & 648 JOHN DEERE SKIDDERS
All years. All models.
NO JUNK
417-293-2802

1328

WANTED TO BUY
Cat 518 & Cat 518C skidders
in TX, LA area
Call Kent 936-699-4700
r_kentjones@yahoo.com

280

REWARD
STOLEN IN MILLER COUNTY AR,
Co Rd 269 behind locked gate at
Handcock Forest Management

- XL 220 Husky loader SN#5867, mounted on International truck 2050A
- 518 Cat grapple skidder SN#95U2967

Contact AR State Police
Hayes McWorter 870-777-8944
Miller County Sheriff
870-774-3001 or

229

FOR SALE

- 1997 John Deere 843G feller-buncher, 11800 hrs.....\$30,000
- 1999 Barko 160D loader w/314 CSI delimeter, 8500 hrs\$30,000
- 2003 430B Timberjack loader w/Hudson delimeter, 8500 hrs\$50,000
- 2004 525B Cat skidder, 8800 hrs\$32,000

Contact Michael • (Day) 918-423-3306
(Night) 580-271-8518

3878

REMAN John Deere & Timberjack OILGEAR Specialist's

LOGGERS HYDRAULICS
Hydraulics since 1974

- SAVE BIG \$\$\$ Over Dealer Pricing!
- Over 30 Years Experience with Oilgear
- New or Reman Parts & We Can Re-work Your End Caps & Swash Blocks - Perfect for Repair Shops
- 18 month Warranty on REMAN Pumps

John Deere: AT172899 • AT172900 • AT195248 • AT353936 • AT140333 • AT133464 • AT180656
Timberjack 460's: F121014 • 811822600 • 30013133 • PVWH34RDFSCNSN826B

We Buy Cores! - Call for details - We Need Cores!

- SALES, SERVICE, & REPAIR ON ALL TYPES OF LOGGING HYDRAULICS -

Specializing in: SAUER-DANFOSS • SUNDSTRAND • REKROTH • EATON CHAR-LYN N • VICKERS • KAWASAKI
COMMERCIAL • LINDE • CAT • PARKER • KOMATSU • FAIRFIELD • POCLAIN • PARKER COMMERCIAL 3-STAGE GEAR PUMPS & more!

"Helping Loggers Get More Hydraulic Help For Less Money!"

3723

800-785-5133 www.loggershydraulics.com **904-688-2247**
Call Today! Email: sales@loggershydraulics.com Jacksonville, FL

HOSE, FITTINGS & CRIMPERS

SERVING THE LOGGING INDUSTRY FOR 20 YEARS.
WE CAN SAVE YOU MONEY.

Tim Alligood
Days or Nights: 1-252-341-9891
email: tim.cavalierhose@yahoo.com

8309

FOR SALE

2011 Cat 563 fellerbuncher
554 hours
\$189,000
Beatrice, Al.
36425

Call 251-564-1352

3720



Quality Equipment & Parts, Inc.

"We Are Loggers Too!"



CSI 143 Delimber on Trailer



Two BARKO Loaders 275B & 160B on Self Propelled Carrier



New Joystick & Mechanical Seats

www.qamparts.com



FD 18 Saw Head



Two Franklin Skidders Q80 & Q90



Cold Fire Products Available!



Log Light Kits now available in Yellow & Red
Rechargeable 16 & 24 LED Super Bright Lights!
Call for a Dealer Near You!

877-664-6337

New & Used Parts

Hwy. 59 N.

Lufkin, Texas

AROUND THE WORLD SALVAGE

TRUCK & TRACTOR EQUIPMENT

Specializing In Skidder Salvage

YOUR SOURCE FOR

GEAR & HYDRAULIC, DIESEL ENGINES & DRIVE TRAIN COMPONENTS

Direct: 936-634-7210 ★ 1-800-IC-PARTS ★ Fax: 936-634-7240

www.aroundtheworldsalvage.com

ROCKWELL, EATON, FUNK, COMMERCIAL, BULLDOG, SPICER, DURST, GEAR PRODUCT

Alternate Parts & Components



We Have Engines, Transmissions & Axles in Stock

PARTS & SERVICE



New and Rebuilt



TRUCKS ● FORESTRY ● CONSTRUCTION

Email: apacgeneral@aol.com

YOUR SOURCE FOR

GEAR & HYDRAULIC, DIESEL ENGINES & DRIVE TRAIN COMPONENTS

TOLL FREE 1-800-251-2789

DIRECT 936-829-7278

FAX 936-829-7283

Equipment & Parts, Inc.

FINANCING AVAILABLE

www.equipmentandparts.com

Office : 903-238-8700 • Shane Fuller : 903-235-1147

Bill Bruner : 903 -235-2805

568

SKIDDERS



2006 Timberjack 460D Grapple Skidder—Dual arch, Winch, Cab with air, 43" Flotation tires ..\$79,500



2003 Timberjack 460D Grapple Skidder—Dual arch, Winch, Cab with air, 30.5 x 32 tires.....\$59,500

FELLER BUNCHERS/ MULCHERS



2006 Hydro-Ax 570—6,700 hours, 20" Hi Capacity Saw Head or 22 inch center post logging head, Good 28L tires, Cab with air\$79,500



2007 Gyro Trac GT13 Mulcher—CIMA Mulching Head, Cummins Power, Enclosed cab with air, Low hour unit, Excellent Condition! Serviced and Ready.....\$79,500



2007 Prentice 2470 Mulcher—“NEW” FAE 200 Mulching Head, “NEW” High pressure pump and hoses, Cummins engine, 28L tires, Cab with air. Has approximately 400 mulching hours since the conversion from a Feller Buncher\$CALL\$



2007 Cat 573 Mulcher—“NEW” Fecon 9021 Mulching Head, “NEW” High pressure pump and hoses, Cat engine, 30.5 x 32 tires, Cab with air. Has 0 mulching hours since the conversion from a Feller Buncher..CALL\$



2002 Hydro - Ax 570 Mulcher—Rebuilt Rotary Ax Mulching Head, “NEW” rebuilt Cummins engine, 34:00 tires, Cab with air.....\$97,500



2011 Prentice 2570 Feller Buncher—367 Original Hours, Full factory warranty through March 2012, Cummins engine, SC57 Prentice Logging head, 28L x 26 tires, Like new!\$CALL\$

LOADER



2004 Timberking TK560 / Prentice 384 Log Loader—CTR 450 Delimber, Trailer, 6,200 hours\$59,500

SAW HEADS

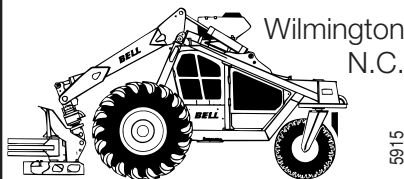


Large assortment of Saw Heads for sale. Fit all sizes of Hydro – Ax, Prentice, Cat, and Timberking\$CALL\$



Visa and Mastercard accepted

ZAMBESI EQUIPMENT INC.



Wilmington N.C.

5915

“Your Reliable **BELL** Dealer”

For The Right Parts Everytime
Used Bells For Sale

Call Henry
1-800-542-3309

USED EQUIPMENT FOR SALE:

- Bell**
- Disc Saw..... \$35,000
 - Ultra T..... \$25,000
 - Super T, Tracks..... \$25,000
 - SlewBoom Tracks..... \$70,000
- Dynamic 515 w/Cummins 275**
..... \$65,000

Turn **TRASH** into
CASH Chip With



FOR SALE

- **2002 Timberjack 840**, FD22 head 67x34 tires.....\$57,000
 - **2007 748H JD skidder** 6900 hrs. d/a,35.5x32 tires.....105,000
 - **2007 Peterbilt 335** crewcab svc.truck Feterl body,wireless crane,Vanair Tiger air comp.,only 52,000 mi.....\$110,000
 - **750C LT II JD dozer** 1825 hrs. enc.cab,6-way blade\$105,000
 - **5-Pitts 4-bolster log trailers**, 11R22.5 tires.....\$10,000 ea
- Call Nipper @ **478-214-7045**

8754

Feller Buncher Users:

Operation of a bent sawdisk will wear the top surfaces unevenly and the disk will quickly get out of balance due to uneven metal loss.

This can cause a disk to measure unevenly on the top surfaces even after straightening. We Straighten and balance ANY sawdisk! Including crack repairs.

CARVER SAWBLADE REPAIR
WASHINGTON NC
252-945-2358

566



FOR MORE QUALITY EQUIPMENT LIKE THESE:



2005 Tigercat 620C, S/N 6200710, 10,120 hours, Dual arch, Tires 30.5x32, Rears 80%, Right front 60%, Left front 30%\$79,500



2003 Tigercat 620, S/N 6200329, 8,090 Hours; Dual Arch,30.5x32 Tires,\$59,500



2007 Tigercat 724E, S/N 7241106, 5702 Saw-head, 8022 hours, 28Lx26 tires, very clean machine\$97,500

ACTIVELY LOOKING FOR COMPLETE FORESTRY PACKAGES.

If you want used forestry equipment, we've got it.

If you've got used forestry equipment, we want it.

Visit our website www.oakleyequipment.com

Call Ted at 256-766-6491 • Cell 256-810-3190 • or DeWayne at 256-710-2111



PROLENC®



We are in the New and Used Business—Riley Delimbers & Slashers, Primex Tires, Stihl, Prolenc, Gator Saw Teeth, McClendon Trailers

We Sell Nationwide • Our Pricing is FOB the Buyers Location in the Continental US

CALL FOR PRICES ON ALL TIRES!

STRICKS EQUIPMENT CO., LLC

5700 Hwy 49E • Yazoo City, MS 39194
www.stricksequipment.com
662-746-8380



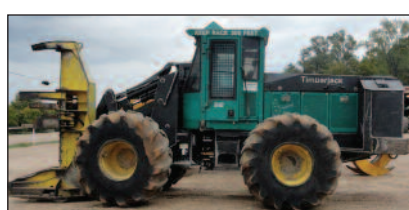
2007 Prentice 2280\$75,000.



2006 Cat D5G LGP\$53,000



2006 Hydro-Ax 470.....\$47,500



2002 Timberjack 840.....\$38,000



2006 John Deere 748GIII, dual arch ...\$55,000



2005 Tigercat 724D\$65,000

EQUIPMENT COMING IN DAILY!

- 06 John Deere 748GIII.....\$52,000
- 97 OT log trailer\$7,500
- 99 Cat 525\$17,000
- 98 Kent loboy\$15,000
- 04 Tigercat 230B w/CTR(call)
- 00 Freightliner classic\$20,000
- Prentice 210D\$8,500
- 2 ground saws
- 04 Magnolia w/vulcan scales ..\$12,000

1551

OZARK MACHINERY COMPANY

10399 Co. Rd. 8270 • West Plains, MO 65775
 1-800-766-6455 • Website: www.ozarkmachinery.com

1328



2008 John Deere 648H Log Skidder, Dual Arch, 30.5x32 tires, Direct drive, 6100 hrs\$99,000



2007 Prentice 2280 Log Loader, 5280 hours, CTR 320 cradle mount delimeter, excellent shape\$69,500



2006 John Deere 648GIII Skidder, 6 cyl. John Deere engine, 7700 hrs., Powershift transmission, Single arch, a/c, 30.5x32 tires ...\$75,000



2003 Prentice 280 TMS Log Loader, with CTR Cradle mount delimeter\$42,500



2005 Prentice 280 Knuckleboom Loader, 4693 hours, mounded on Big John carrier\$69,000



2010 Conehead 585 Chipper, Cummins 500 hp, Powered infeed & side rolls, Live infeed bed,Price on Request



7951

IRONMART™

Your Recycling & Forestry Used Equipment Source



2010 Cat 559DS
 CTR 426 delimeter
 \$99,000



2008 Deere 648H
 130" CCR grapple
 \$99,000

We also BUY Used Recycling & Forestry Equipment

Skidders

- (5) 06-10 Cat 525C \$75-165,000
- (2) 06-08 Cat 545C \$125-165,000
- 04/06 Cat 535B&C \$60-119,500
- (2) 06 Cat 535C \$119,000
- (2) 08/10 Deere 648H \$99-169,000
- (2) 06/07 Tigercat 620C \$90-100,000
- 96 Timberjack 450C \$24,000

Knuckleboom Loaders

- 06-10 Cat 559 & 559B \$105-160,000
- 01 Cat 322BL \$109,000
- 03-06 Cat 325CFM / 324 \$75-150,000
- 08 Prentice 2384TMS \$40,000
- 04 Prentice 410E \$59,000
- 02Prentice 280TMS \$29,000
- 04 Prentice 410E CTR 450 \$59,000
- 01-05 Prentice 384TMS \$35-85,000
- 98 Prentice 310E CTR 400 \$30,000
- 04 Tigercat T250B \$85,000

Feller Bunchers

- 10 Cat 553 \$165,000
- (2) 08/11 Cat 563, 22HC \$130,000
- 08 Cat 563, SH56 \$135,000
- 04 HX 470 \$40,000
- 06 HX 670 \$95,000
- 96 Hydro-Ax 511EX \$24,000
- (2) 08 Prentice 2470 \$125-130,000
- 07 Prentice 2570 - 3700 hrs \$95,000
- (2) 04 Timberking 350, 22HC \$65,000
- 04 Timberking 721B, 36" TG \$115,000

Grinders-Chippers Debarkers

- 07/09 DO 3060K/3080K \$350-590,000
- 07/09 Doppstadt SM720 \$180-220,000
- 07 Doppstadt AK230 \$225,000
- 03 Duratech 4012 \$170,000
- 08 Metso ST620, 384 \$130-325,000
- 03 Morbark 3600 \$155,000
- 98 Morbark 1300 \$115,000
- 96 Morbark 2755 \$349,000
- (2) 08 Peterson 5900 \$180,000
- 08 Peterson 5710C warr \$540,000
- 06 Peterson 6700 \$399,000
- (2) 06 Peterson 4710 \$440,000

Mowers/Mulchers

- (2) 06/07 Kodiak B160 CALL

Misc.

- CSI DT2800 \$25,000
- 10 CSI Slasher Flat V bunk \$12,000
- 69 Rogers 40 ton lowboy-rebuilt \$24,000
- 02 White 35 ton \$20,000
- 04/05Peterson 4800 \$99-199,000
- (3) 04/06 Peterson 4700B \$200-350,000
- (2) 00/02 Peterson 5000G \$125-275,000
- 07 Vermeer TG7000 \$280,000
- 08 Woodsman 337 CALL

888.561.1115

View our entire inventory online at

IronMart.com



A DIVISION OF
PUCKETT MACHINERY COMPANY

Puckett



USED LOGGING EQUIPMENT

LOADERS:

- 280 Prentice 04, PR59606, CTR 450 del, Deere engine..... \$35,000
- 384 Prentice 05 PR61306, Trailer Mounted, clean, 10,820 hrs..... \$49,000
- 384 Prentice 03, PR60051, CTR del, Deere engine.....\$39,000
- 430-B Timber Jack 04 X012170, Hudson Delimber.....\$27,000

SKIDDERS:

- 525B CAT 03 03KZ00914, 8,556 hours, single arch, cold A/C..... \$41,500
- 525C CAT 10 052500801, 4,300 hrs, SA, 30.5 tires.....\$129,000
- 525C CAT 09 052500712, SA, 30.5 tires, 5,500 hrs.....\$120,000
- 648G Deere 06 601846, SA, 43:00 tires, 9,000 hrs.....\$63,000

CUTTERS:

- 411-EXP Hydro-Ax 03 8230, 18" thinning saw, 28L tires, 9,295 hrs...\$35,000
- 2670 Prentice 07 PB19312, 22" side cut saw, 34:00 tires, excellent..\$89,000
- 840 Timber Jack 02 X002043, New teeth, Good rubber, 7,139 hrs....\$59,000

DOZERS:

- 650J Deere 09 X172307, 2,100 hrs \$97,000
- D5N LGP CAB CAT 05 AKD00457, 5,434 hrs..... \$68,500
- D6R CAT 06 WRG00266, 5,965 hrs.....\$181,000

WHEEL LOADERS:

- 966H LL CAT 09 0A6D02241, 8,545 hrs..... \$260,000

MISC:

- CTR Model 42-IP Slasher.....\$8,000
- Timberjack 58 Slasher.....\$5,500
- Timberjack Model 45 Del S/N 981762, with Cummins engine..... \$8,500

Call Us Today!



Pat Doyle
Used Forestry Sales Manager
(601) 684-9962 Direct
(601) 810-3363 Cell

Chris May
Used Equipment Sales Specialist
(601) 985-3700 Direct
(601) 572-0044 Cell

800-748-3095

See our complete inventory online:
www.dmequipment.com www.puckettcat.com

FOR SALE

- 2006 Tigercat, 244 Loader Riley delimber and hydraulic trailer, Excellent condition, 8,200 hours\$89,500
- 2008 Tigercat 718 Feller Buncher, 5001 Saw head, 28L tires, Excellent Condition, 5,000 hours\$93,500
- 2007 Tigercat H250B Processor, Waratah 622B Processing Head, Excellent condition, 7,000 Hours\$190,000
- 2004 Tigercat 724D Feller Buncher, 3 0 . 5 x 3 2 tires, 5701 Saw head, Excellent condition, 9,000 Hours.....\$84,500
- 2009 Bandit 3590 Chipper, 700HP, 2,250 Hours, Excellent Condition\$269,000
- 2006 Peterson 4710B Grinder, 650H.P., Cat Engine, Excellent Condition, 4,000 hours \$230,000
- 2004 Tigercat 620 Skidder, Dual Arch, Excellent Condition, 8,000 Hours.....\$65,000
- 2002 Tigercat 635 Skidder, New engine, New 30.5x32 Firestone front tires, 70% rear tires, Excellent Condition.....\$125,000
- 2008 Rotobec RPA 3045R Grapple, 4 - o v e r - 3 tongs, Like new, Less than 500 hours.\$10,000
- 2001 Prentice 210E-SE Loader, Stationary Electric with riser, Good condition.\$25,000
- 2010 Tigercat 724E Feller Buncher, 5500 Saw head, 30.5x32 tires, Like New! 3000 hours\$180,000
- 1997 Cat 525 SkidderSingle arch grapple, Fair condition\$24,500
- 1997 Ranger H67H Skidder, Good Condition\$23,000
- 2007 Riley 4300C Slasher, Excellent Condition\$8,500
- Waratah Trailer and delimber, Good Condition\$8,000
- 2009 Bandit 2290 Chipper, 365HP Cummins with warranty, 800 hours, excellent condition\$127,500



bobby@smithturner.com
770-718-8126
Office: 770-536-7521
1-800-288-1721

1654

WATERS

International Trucks

65 Hwy 19 North Meridian, MS 39304
1.800.844.1600
www.waterstruck.com

USED EQUIPMENT:
07 Barko 495 ML/CSI 264/Trl..\$75,000
Demo Dynamic 585 12 hrs.....\$POR
05 Barko 495 ML/CSI/ TRL.....\$52,500
06 CSI 264 & 4200
Rev Swingout Saw/ TRL.....\$28,000
03 CSI 264/ TRL.....\$17,000



New 495ML & 595ML's
in stock with CSI
delimbers and slashers
available

MS Dynamic Dealer for the
Dynamic Conhead Chipper

Sales: **David Sanders**
601.917.7131 (cell)
1*57*997 (Southern linc)
dsanders@waterstruck.com

Ronnie Sims 7393
601.479.4679 (cell)
1*57*789 (Southern linc)
rsims@waterstruck.com

Parts: **Ryan Shelton**
1*57*480 (Southern linc)
rshelton@waterstruck.com

EASTERN Equipment Brokerage, Inc.

252-946-9264



John Deere 748GIII '05 D/A grapple, 4700 hours, SWEDA axles, winch, dual 24.5x32 tires.....\$Call



Trelan 233 '99 Whole Tree Chipper, CAT E3412; remote control, good solid machine\$79,500



Hydro Ax 670, '02 with 22" side cut saw, Cummins 8.3 w/ 8998 hours\$Call

CALL CHARLES or visit website for full specs and details
www.eebinc.com

562

EQUIPMENT FINANCING

- Preferred Good Credit Plans
- Rough Credit Plans (turned down, tax liens, bankruptcies)
- Purchases • Refinance
- Start-up Business

• Loans Against
Your Existing Equipment
for QUICK CASH!

2-Hour Approvals!
Low Monthly Payments
Little or No Down Payments

15 Years In Business

CALL NOW
985-875-7373

Fax: 985-867-1188

Email: coastalcapital@bellsouth.net

Personal Service
Ask For L.T.
DEALERS WELCOME

1447

THANK YOU.

We want to say Thank You to all of our advertisers. You had a choice and you chose Southern Loggin' Times.
your equipment, your company, your choice.



TIDEWATER EQUIPMENT CO.

MAC McLAURIN • 910-610-7029

Call or visit our website: www.tidewaterequip.com

SKIDDERS

(3) CTR 950 D/A and S/A.....	\$25,000-\$70,000
2004 CAT 525B.....	\$46,000
2005 CAT 525B.....	\$79,200
2007 CAT 525C.....	\$70,000
2008 Cat 525C.....	\$107,500
2009 CAT 525C.....	\$131,000
2003 Deere 648GIII D/A.....	\$25,500
2008 Deere 648H D/A.....	\$100,000
2004 Tigercat 620 D/A.....	\$72,500
2005 Tigercat 620C S/A SWEDA.....	\$95,000
2005 Tigercat 620C D/A.....	\$85,000
2006 Tigercat 620C S/A.....	\$93,500
2001 Tigercat 630B D/A.....	\$40,000
2004 Tigercat 630C S/A.....	\$75,000
2004 Tigercat 630C S/A.....	\$84,000
2005 Tigercat 630C D/A SWEDA.....	\$60,000
2006 Tigercat 630C D/A.....	\$85,000
2003 Timberjack 460D.....	\$45,000
2004 Timberjack 460D.....	\$58,500
2005 Timberjack 460D.....	\$57,000

FELLERBUNCHERS

1995 Deere 643 Saw.....	\$22,500
2002 Hydro-Ax 411 Ex/20 Saw.....	\$38,000
2005 Hydro-Ax 670.....	\$62,000
2009 Prentice 2470.....	\$112,500
2005 Tigercat 718/5500.....	\$94,000
2005 Tigercat 720D/5600 Saw.....	\$82,000
2004 Tigercat 724E/5600 saw.....	\$87,500
2005 Tigercat 726D/4702 saw.....	\$82,500
2004 Tigercat 822.....	\$144,900
2002 Timberjack 608S.....	\$63,750
2004 Timberking 340.....	\$40,000

LOG LOADERS

1998 Barko 160D/CTR 400.....	\$21,000
2006 Deere 437C/Rotobec.....	\$72,500
2004 Prentice 280.....	\$43,750
2007 Prentice 2280.....	\$81,000
1999 Tigercat 230B/CTR 400.....	\$10,000
2005 Tigercat 230B/143 CSI.....	\$68,500
2003 Tigercat 230B/CTR.....	\$45,000
2007 Tigercat 234.....	\$100,000
2008 Tigercat 234.....	\$125,000

2005 Tigercat 240B.....	\$52,500
2005 Tigercat 244.....	\$50,000

INDUSTRIAL EQUIPMENT

2002 Franklin Mulcher C4550.....	\$46,100
2002 Morbark 30NCL Chipper.....	\$187,500
2006 Morbark 6600 1050HP.....	\$271,900

MISCELLANEOUS

Assortment of tires and rims for Deere/
Tigercat
CTR 314 and 400 Delimiters
.....\$1,000 to \$18,000
New/Used Magnum and FECON
Mulcher heads
(3) K Saws.....\$5,000 to \$10,000
Tigercat Shears and Saws...\$2,500 to \$20,000

LIQUIDATION SALE

New Chippers
New Mulching Machines
Starting under \$2899/month

View our web site for over 200 listings with newly reduced prices and pictures

2687



JASON WELLS
jwells@striblingequipment.com

(601) 939-1000

STRIBLING EQUIPMENT, LLC

2005 Deere 650JLGP



S/N 115158, 3622 hrs.....\$68,000

2006 Deere 648GIII



S/N 607178, 5840 Hours.....\$72,000

2007 Deere 700J



S/N 146875, 2088 Hours.....\$78,500

2006 Deere 648GIII



S/N 606145, 7582 Hrs..... \$75,000

2005 Deere 437C



S/N 013036, 7766 hrs.....\$66,000

2002 Deere 335C



S/N 012058, 13,383 Hours.....\$28,000

2002 Timberjack 460D



S/N 582906, 11,056 hrs.....\$45,000

2001 Timberjack 660D



DF/DD/30.5.....SALE PRICE \$47,000



JOHN DEERE

www.striblingequipment.com

1-800-682-6409

We buy used forestry equipment

Visit us online:
www.southernloggintimes.com

IF YOU NEED

To buy or sell forestry, construction, utility or truck equipment, or if you just need an appraisal, contact me, Johnny Pynes with JM Wood Auction. Over 25 years experience.

Day 334-312-4136
Night 334-271-1475
or Email: johnwpynes@knology.net

FOR SALE

2010 630D Tigercat skidder. Dual arch, winch, heavyduty tigercat axles with dual rings, turn-around seat. 4,200 hours warranty remaining. Good tractor\$165,000
2005 630C Tigercat skidder. Dual arch, winch, sweda axles. 7200 hours. Good shape...\$70,000
2004 322 Cat shovel. Brand new undercarriage, jewel grapple, approx. 6000 hours\$65,000
2004 384 Prentice log loader with 4400 CSI ground saw, 11,000 hours, cold a/c\$40,000
1997 Prentice 310E log loader, new engine, tag along delimeter\$20,000

912-281-7318
or 912-449-6002

RECONDITIONED DELIMBINATORS!!

In addition to new machines, CHAMBERS DELIMBINATOR, INC. now has factory reconditioned



Delimbinators. These units have been inspected, repaired, and updated as needed. Call us and we will help you select a Delimbinator for your need.

WE ALSO BUY USED DELIMBINATORS

Call: 662-285-2777 day, 662-285-6832 eves
Email: info@chambersdelimbinator.com

1123

**Top Quality Used Parts
Our Specialty Fair Prices
Customer Satisfaction**



Caterpillar	Tigercat
Franklin	Prentice
Clark	Barko
Timberjack	Husky
John Deere	Kobelco
Tree Farmer	Timberking
Hydro-Ax	

In Business 40 Years

P.O. Box 98 • Moncks Corner
SC 29461 • 843-761-8220
Fax: 843-899-2492

Night Equip. Sales:

Allen Ward — 843-509-0005
Johnny Ward — 843-860-1630

Night Used Parts:

Robert Mullinax — 843-569-3513
Toll Free: 800-845-6648

www.wwtractor.com



1926



**WORK READY USED PARTS
RIGHT HERE!**

- ** CAT 535C: 266-9933 Center Drive Shaft\$950
- ** John Deere 648GIII: AT177543 Grapple Rotate Motor\$500
- ** Tigercat 7-Series: 90502 Spool Valve Sections\$400/ea
- ** Tigercat 6-Series: AW110 Multifunction Manifold\$1,000
- ** 170/C7F: 3910991 Outlet Pipe (Exhaust)\$50

CONTACT:

478.550.2330 - Keith
478.256.4063 - Gary
478.550.2375 - RJ

FORESTRYPARTSRESOURCE.COM

249

EUREKA! EUREKA! EUREKA!

OWNERS HAVE OVER 30 YEARS COMBINED EXPERIENCE!

We can save you money on Saw Teeth. Hundreds of satisfied customers. Rebuilt Exchange or New. We specialize in rebuilding Koehring 2000, Hurricana, Hydro Ax split teeth and all other brands. Call Jimmy or Niel Mitchell. Quantity Discounts!



EUREKA SAW TOOTH CO., INC.

4275 Moores Ferry Rd. • Skippers, Virginia 23879
PH./FAX (day) 1-434-634-9836 or Night/Weekends • 1-434-634-9185

7180

**WANTED
DEAD OR ALIVE**



**1960-2005 MACK TRUCKS
PAYING TOP \$DOLLARS**

**ALSO OFFERING \$200 REWARD FOR INFORMATION
LEADING TO THE PURCHASE OF A TRUCK**

3664

CALL SPARR TRUCK PARTS • 866-448-6322

MEMPHIS EQUIPMENT Company

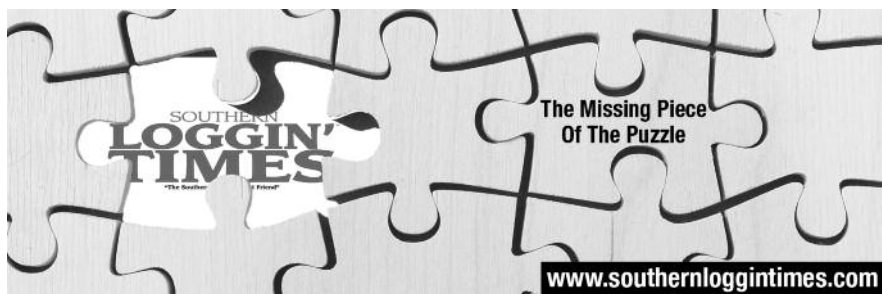
THE NATION'S LARGEST ARMY TRUCK DEALER

PULL OUT TRUCK



**5 TON 6X6
CUMMINS 250
RECONDITIONED
\$16,500
30 DAY PARTS WARRANTY
DELIVERY AVAILABLE**

766 S. THIRD • MEMPHIS, TN 38106
901-774-0600 • FAX: 901-946-1919
www.memphisequipment.com
email: info@memphisequipment.com



www.southernloggintimes.com

OREGON OREGON OREGON OREGON

www.loggingparts.com
Fax: 912-375-0733
Hazlehurst, GA 31539
Office: 912-375-5665
1-800-284-9032
NEW AND USED LOGGING PARTS

G & W Equip. Inc.
Authorized Distributor
Aftermarket Parts INC

Cummins GOLD FIRE

OEM & Aftermarket Parts For All Makes

OREGON OREGON OREGON OREGON

7195